




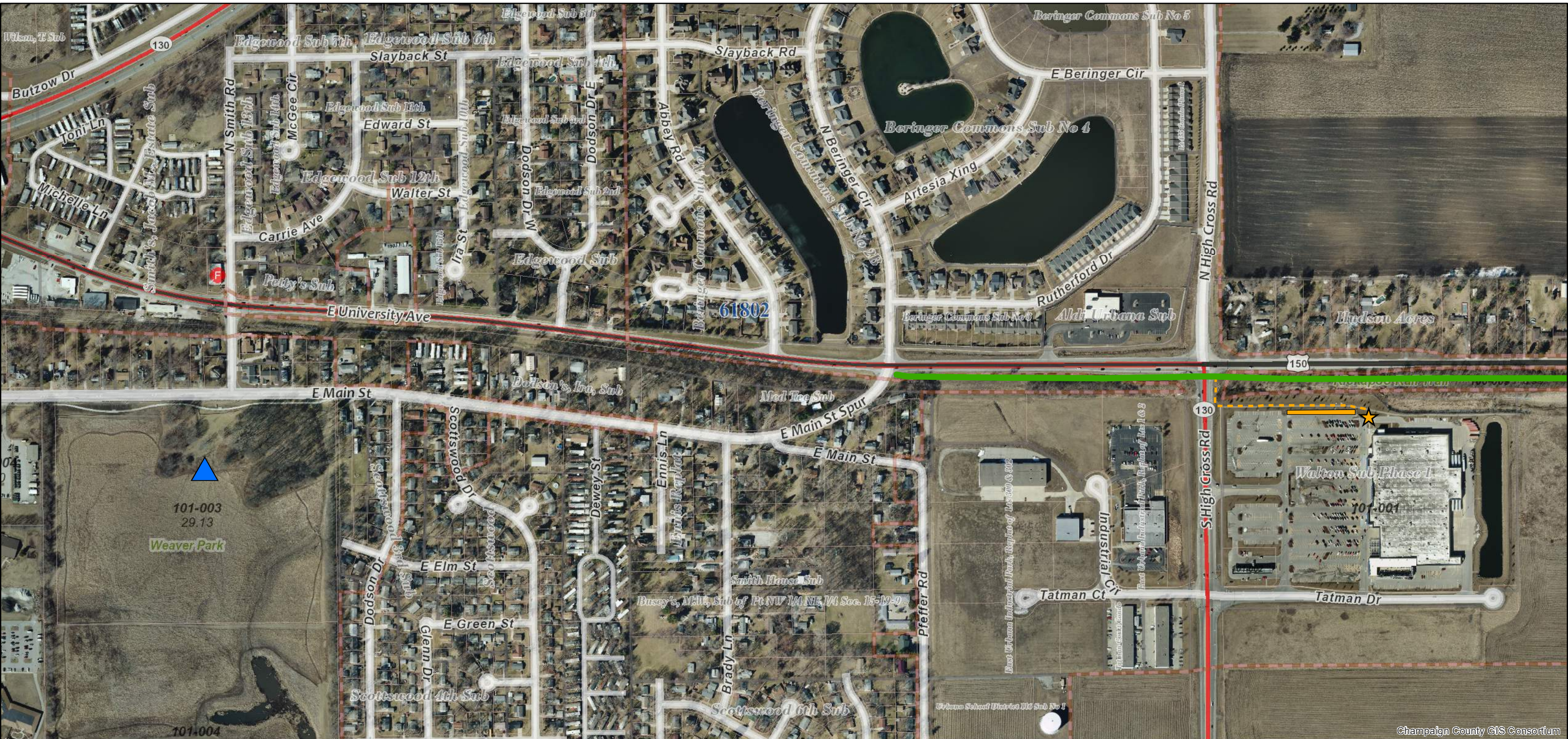


Kickapoo Rail Trail

West End Access

Note: E. Main St bike lane ends between Scottwood Dr and Dewey St. Proceed with caution if utilizing Weaver Park grass lot. Walmart parking lot is recommended until an engineered connection is completed.

-  Kickapoo Rail Trail (Champaign County Forest Preserve District)
-  Weaver Park - Grass Parking at Proposed Trailhead (Urbana Park District)
-  Walmart Parking (Use Northernmost Row Closest to Building Only)
-  Accessible Curb Cut
-  Walmart Connection



The GIS data shown here is intended to be used as a general index to spatial information, and is not intended for detailed, site-specific analysis or resolution of legal matters.

